

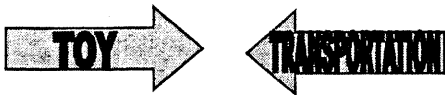
TEXAS BIKE LAWS

Learning to Share the Road

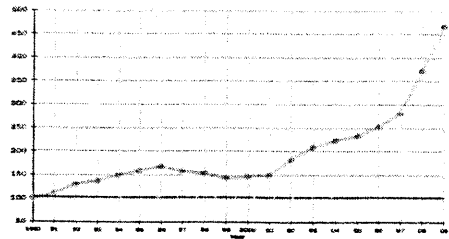
Mark Goodner
Program Attorney & Deputy Counsel
TMCEC

Objectives

- Identify and apply statutory rules and regulations specifically set forth for Bicycles in Chapter 551 of the Transportation Code
- Compare and contrast the rights and duties of drivers of bicycles vs. motor vehicles



126% increase in people using bicycles to commute.



2009 Sustainable Streets Index report

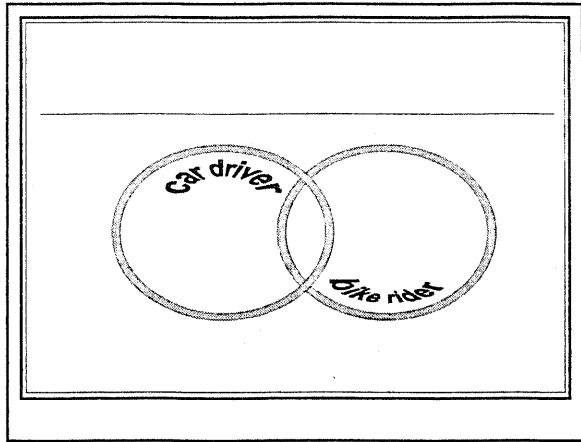
The Evolution of the Bicycle

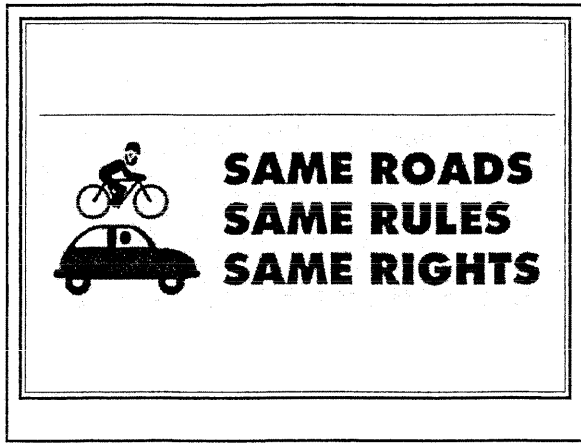
- Our thinking hasn't evolved but the bike has...

Statistics

(2008 Data released in 2010 and still the most recent)

- 716 bicyclists died on US roads
- Bicyclist deaths represented 2% of all 2008 traffic fatalities
- 1/7 of the cyclists killed were between 5-15 years old
- 52,000 bicyclists were injured in traffic





What is the Inherent Problem with This?

Applicability Chapter 551

Applies to persons operating a bicycle on a highway or path set aside for the exclusive operation of bicycles

(includes mopeds and electric bicycles)



What is a Bike? (sec. 541.201)

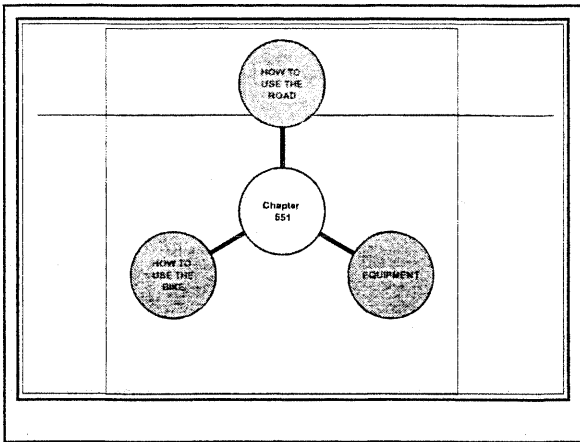


A device a person may ride that is propelled by human power and has two tandem wheels at least one of which is more than 14 inches in diameter.

Parents Beware



A parent may not knowingly permit a child to violate rules applicable to bikes.



Rights and Duties

A person operating a bicycle has the rights and duties applicable to a driver operating a vehicle.

unless

- Altered by statute
- Right or duty cannot be applied to a person operating a bicycle

General Operation

A person operating a bicycle shall ride only on or astride a permanent and regular seat attached to the bicycle.

General Operation

A person may not use a bicycle to carry more persons than the bicycle is designed or equipped to carry.

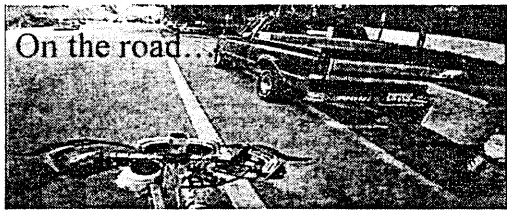
General Operation

A person operating a bicycle may not use the bicycle to carry an object that prevents the person from having at least one hand on the handlebars of the bicycle.

General Operation

A person operating a bicycle, coaster, sled, or toy vehicle or using roller skates may not attach either the person or the bicycle, coaster, sled, toy, vehicle or roller skates to a streetcar or vehicle on a roadway.

On the road...



A person operating a bicycle on a roadway who is moving slower than the other traffic on the roadway shall ride as near as possible to the right curb or edge of the roadway.

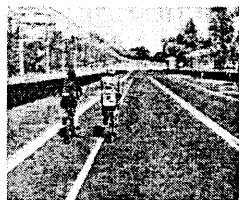
Except...

A bicyclist is can use the full lane of travel when:

- Passing another vehicle moving in the same direction
- Making a left turn
- Unsafe conditions on the roadway
- Lane is of substandard width (less than 14 feet in width) and does not have a designated bicycle lane or is too narrow for a bicycle and a motor vehicle to safely travel side by side.

Operation on the Roadway

- May ride two abreast
- Must ride in a single lane
- May not impede the normal and reasonable flow of traffic



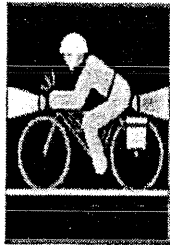
Safety Equipment

Bike must be equipped with a brake capable of making a braked wheel skid on dry, level, clean pavement.



BIKES at NIGHT

■ A white light visible from a distance of at least 500 feet in front of the bike; and



■ Must have red reflector visible from 300 feet, or
■ A lamp that emits a red light visible from 500 feet to the rear of the bicycle

COMPETITIVE RACING



- approval of the appropriate local law enforcement
- agree on safety regulations.

Trends in Bike Law (local ordinances)

- Distance laws
- Helmet laws
- Registration
- Riding restrictions (i.e. on sidewalk)
- Bike bans

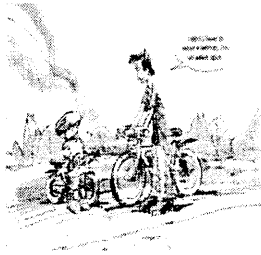


Austin Ordinance (October 22, 2009)

The law requires motorists to provide at least 3 feet and trucks to provide at least 6 feet of room when passing "vulnerable road users."



HELMET LAWS



Texas does not have a statewide bicycle helmet law.

MUNICIPALITIES and HELMETS



Arlington, Austin, Fort Worth and Houston
 (under 18 y/o)
 Benbrook (under 17 y/o)
 Bedford (under 16 y/o)
 Coppell and Southlake (under 15 y/o)
 Dallas requires all persons, regardless of age,
 to wear a bicycle helmet.

Houston Ordinance (Section 45-311)



This ordinance requires all bicycles to be registered. Owners of non registered bicycles can be ticketed and fined \$5.

BIKE BAN



“requires groups of 10 or more to apply for a rally permit.”

■ Bartonville Code of City Ordinances 484-09

